

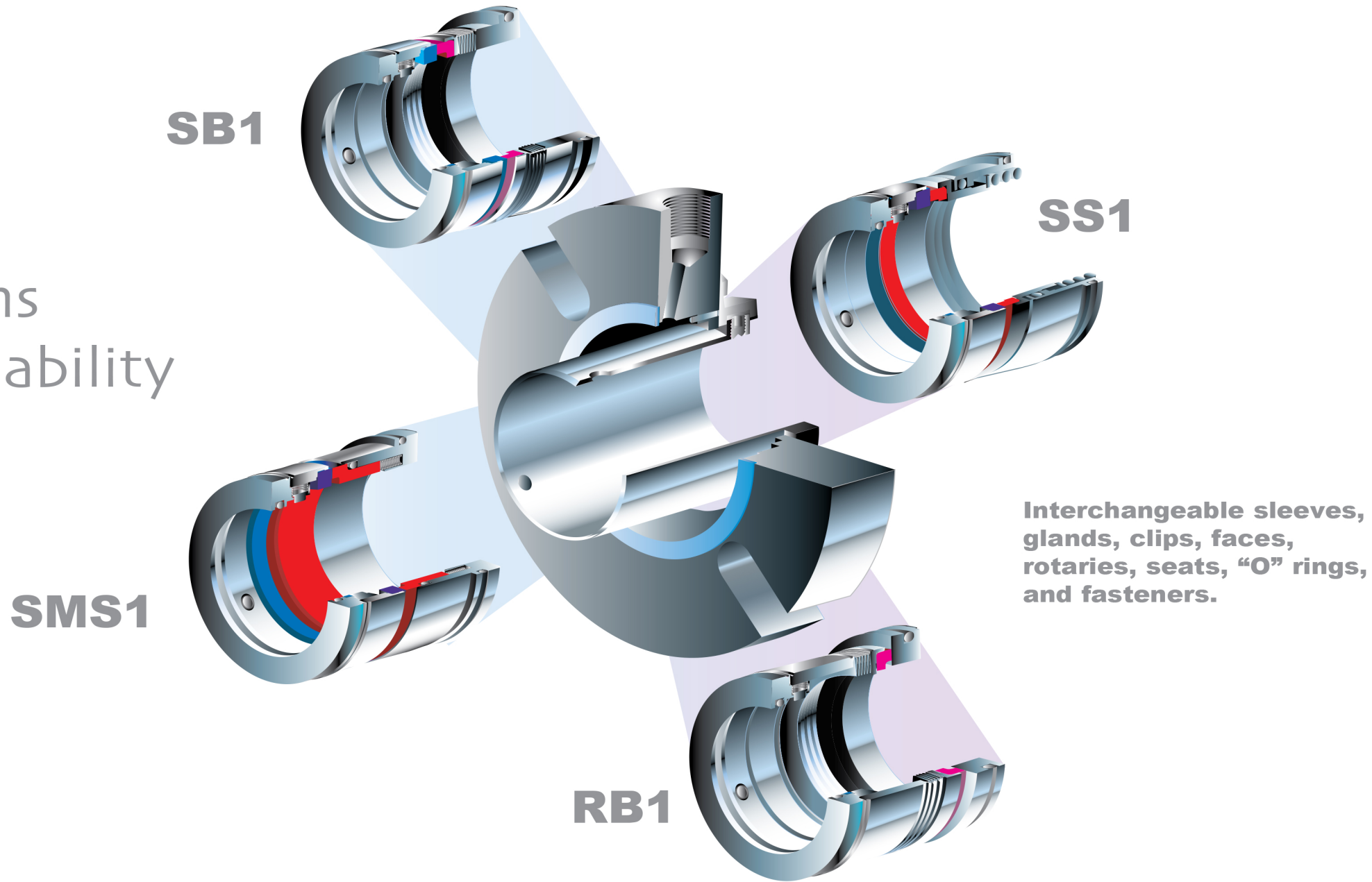
**Strategic  
Versatility**  
**SMS1, RB1, SB1, SS1**



*One design,  
Four Integrated Seals*



# Versatility Means Savings and Reliability



Interchangeable sleeves, glands, clips, faces, rotaries, seats, "O" rings, and fasteners.

With common sleeves, glands, and seal parts for all designs, cartridge assembly is quick and fail-safe. Plus, it's easy to modify face material, metallurgy and elastomers. This strategic grouping covers 80% of industries' sealing applications. The efficiency gained allows aggressive price structures and even low-cost repair kits and exotic alloys at substantial savings. Flex-A-Seal's famous premium welded bellows designs are included at multiple spring prices.

Downstream, the benefits start with quick deliveries, allowing customers to minimize inventories through various exchange programs.

Design advantages are: simple, easy-to-install cartridge designs; sleeves that are isolated from the product; fewer "O" rings and rugged machined construction.

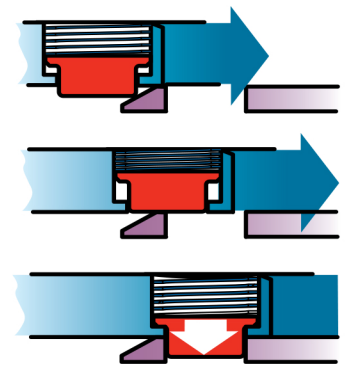
**There are Clear Reasons to Employ the Integrated Cartridge System**

The efficiency gained allows aggressive price structures and even low-cost repair kits and exotic alloys at substantial savings. Flex-A-Seal's famous premium welded bellows designs are included at multiple spring prices.

Traditional cup point set screws in rotating units are replaced by a patent pending Plunger-Lock drive. The torque transmission strength is increased 5 fold over traditional cup point set screws. Most importantly, it allows for quick/easy assembly and seal-kit replacement.

The entire drive mechanism is out of product. This system eliminates any possibility of sleeve distortion from over-tightened set screws. There are no set screws to "back out". The spring-loaded mechanism keeps the lug "trapped" in position.

**No more difficult set screws. Our unique, Plunger-Lock Drive makes assembly easy. (Patent No. 7979986)**

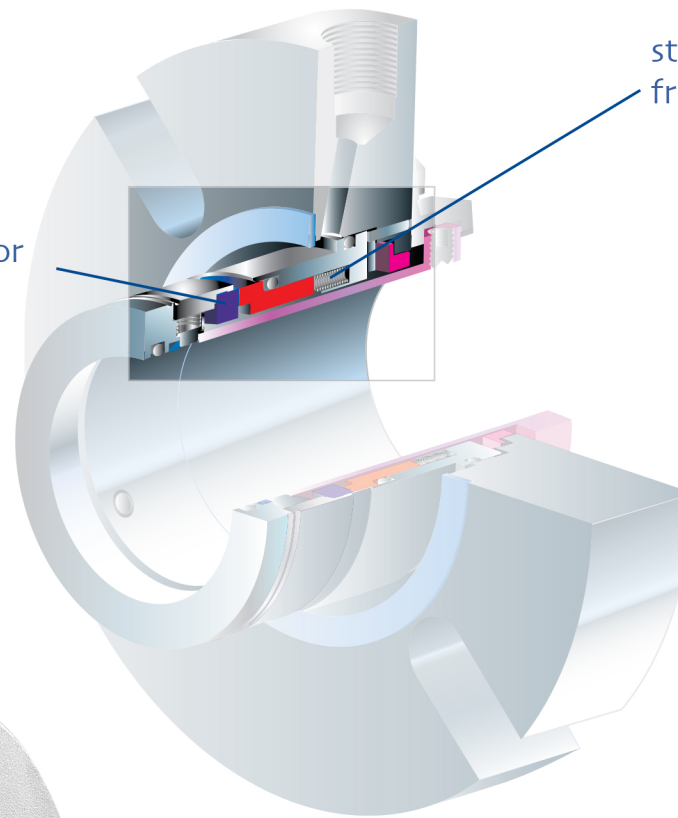




## SMS1 Stationary Multiple Spring Cartridge

rotating mating ring for better face alignment and heat dissipation

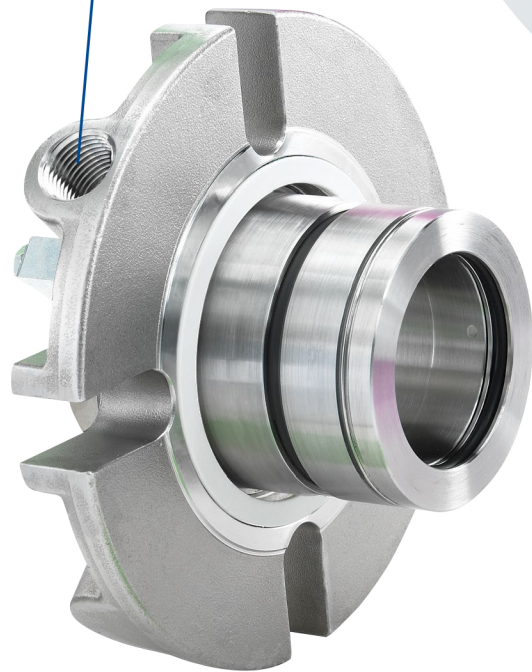
stationary springs isolated from the process



SMS1	
Rotary Face	Silicon Carbide
Stationary Face	Carbon Silicon Carbide
Springs	Hast** C
Metal Parts	316 SS/17-4 316 SS Hast** C276 Consult factory for special alloys
"O" Rings	Viton@+ Ethylene Propylene AFLAS* Perfluoroelastomer
Max. Temp.	400°F*** (200 °C)
Max. Pressure	300 PSI (carbon)(20 BAR) consult factory for higher pressures
Max. Speed	6000 fpm

\*\*\*Certain "O" rings will lower temperature limitations  
 @Viton® is a DuPont Performance Elastomer  
 \*Asahi Glass Company Ltd. Registered Trademark  
 \*\*Cabot Stellite Div. Registered Trademark

flush connection



- FAS' most cost effective cartridge design
- monolithic face w/ homogenous material
- drive mechanisms out of product
- springs are out of product, minimizes corrosion and stress related failure
- unique shrouded rotary for maximum face protection and reliable startup
- uniform 360 degree transfer of torque to rotating face

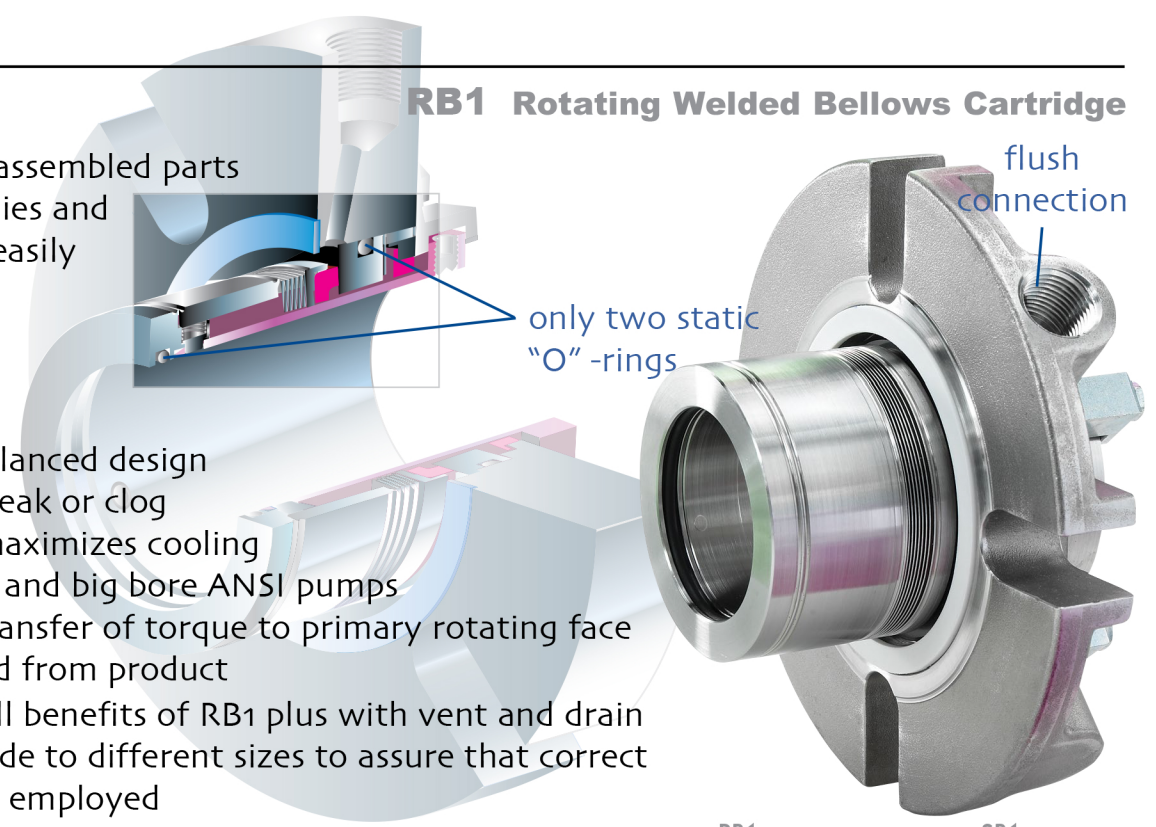
- seal faces positioned in gland for maximum protection
- dynamic elastomer moves on non-metallic surface eliminating fretting
- faces designed for optimum heat dissipation
- sleeve is isolated from product
- hydraulically balanced
- easy cartridge installation
- flush position maximizes face cooling
- fits all standard and large bore ANSI pumps
- **SMS3 FV&D** all benefits of SMS1 plus with vent and drain connections made to different sizes to assure that correct piping plans are employed
- very cost effective upgrade

## RB1 Rotating Welded Bellows Cartridge

- only 4 primary assembled parts
- faces, metallurgies and elastomers are easily upgradeable
- self cleaning
- easy cartridge installation
- hydraulically balanced design
- no springs to break or clog
- flush position maximizes cooling
- fits all standard and big bore ANSI pumps
- uniform 360° transfer of torque to primary rotating face
- sleeve is isolated from product
- **RB3 FV&D** all benefits of RB1 plus with vent and drain connections made to different sizes to assure that correct piping plans are employed

only two static "O" -rings

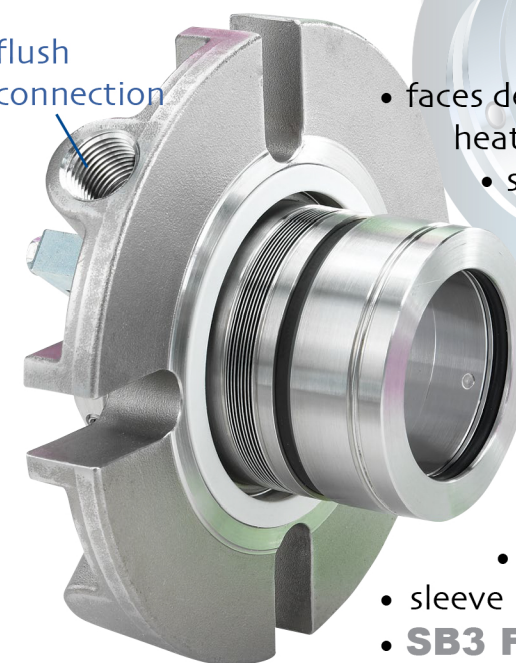
flush connection



## SB1 Stationary Welded Bellows Cartridge

stationary bellows for maximum face alignment

flush connection



- faces designed for optimum heat dissipation
- shrouded rotary seal ring for maximum face protection and reliable start-up
- easy cartridge installation
- no dynamic elastomers
- hydraulically balanced design
- even face loading
- flush position maximizes face cooling
- fits all standard and big bore ANSI pumps
- uniform 360° transfer of torque to the primary rotating face
- only 2 static "O" rings
- sleeve is isolated from product
- **SB3 FV&D** all benefits of SB1 plus with vent and drain connections made to different sizes to assure that correct piping plans are employed
- very cost effective upgrade

	RB1	SB1
Rotary Face	Carbon Nickel Tungsten Carbide Silicon Carbide	Silicon Carbide
Stationary Face	Silicon Carbide	Carbon Nickel Tungsten Carbide Silicon Carbide
Metal Parts	Hastelloy** C 276 316 SS	Hastelloy** C276 316 SS/17-4 316 SS Hast** C276
"O" Rings	consult factory for special alloys Viton@+ Ethylene Propylene AFLAS* Perfluoroelastomer TJV@+	consult factory for special alloys Viton@+ Ethylene Propylene AFLAS* Perfluoroelastomer TJV@+
Max. Temp.	400°F (200°C) consult factory for higher temps.	400°F (200°C) consult factory for higher temps.
Max. Pressure	300 PSI (20 BAR)	300 PSI (20 BAR)
Max. Speed	4500 fpm	6000 fpm

\*\*\*Certain "O" rings will lower temperature limitations  
 @Viton® is a DuPont Performance Elastomer \*Asahi Glass Company Ltd. Registered Trademark  
 \*\*Cabot Stellite Div. Registered Trademark



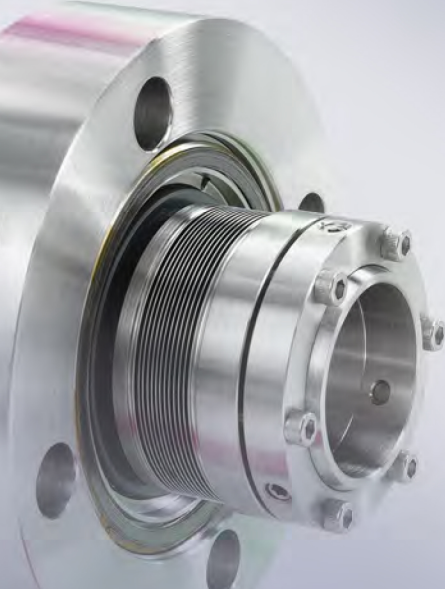
Flex-A-Seal offers a line of welded metal bellows seals to handle extreme high-heat operating conditions. Full technical specification and application information is available upon request.

## Styles 60/62/64/66 High Temperature Solutions



Capabilities include:

- Temperatures to 800°F/425°C
- Compatible metallurgy for high temperatures
- High temperature static grafoil packing throughout
- Balanced design - pressures to 300 PSI
- Self-cleaning
- Stationary and drive lug options
- Cartridge designs available
- Single and double-ply AM350, Inconel 718 bellows available
- Easy installation
- Individual connection sizes to assure proper piping
- Easily upgradeable to API design specifications



**Manufacturing and stocking centers**

### USA

1 Jackson Street PO Box 184  
Essex Junction, VT 05453-0184 USA  
Phone: 1-800-426-3594 • 1-802-878-8307  
Fax: 1-802-878-2479  
Email: [sales@flexaseal.com](mailto:sales@flexaseal.com)

### BRAZIL

Rua Javaés, 441/443  
Bom Retiro, Sao Paulo  
Brazil CEP 01130-010  
Phone: 55-11-3736-7373 • 55-11-3736-7371  
Fax: 55-11-3736-7355  
Email: [vendas@flexaseal.com.br](mailto:vendas@flexaseal.com.br)

**DISTRIBUTED BY:**

